

IMPACT

WINTER 2024

workforce
SERVICES UPDATE

breaking
barriers

meet

CHARITY
HAMPTON





letter from the editor

Dear Readers,

At IFB Solutions, we use generous contributions like yours to provide essential services that enable our employees and community members to thrive. From

on-site medical care and transportation to training, low vision aids, and children's programs, your donations open doors to independence and opportunity, ensuring that those we serve can lead fulfilling, self-sufficient lives.

As our Asheville facility was greatly impacted by Hurricane Helene, we are thankful to report that all 107 employees are safe and healthy. The team is deeply appreciative of the donations and essential items collected to help them rebuild. Fortunately, the Asheville

facility sustained no damage and successfully reopened on October 7.

While it will take time to reach 100% operating capacity, we are working diligently to serve our customers and meet the needs of our employees. The road to full recovery will be challenging, but with the unwavering support of our community and the dedication of our team, we are confident that we will emerge stronger than ever. Together, we can overcome any obstacle and continue creating opportunities for people who are blind or visually impaired.

Warm regards,

Anastasia Powell

meet charity spotlight

Empowering Independence How IFB Solutions Builds Bright Futures

IFB Solutions offers a wide range of programs that empower individuals who are blind or visually impaired to lead independent and fulfilling lives. Charity Hampton, an instructor in the S.E.E. (Student Enrichment Experience) Program and a Low Vision Associate, is a shining example of how IFB's initiatives create lasting opportunities.

Charity's journey with IFB began as a student in the S.E.E. Program, which provides K-12 students who are blind or visually impaired with essential independent living skills through camps and activities. "Investing in the lives of our children is investing in the future," Charity says.



Young Charity Hampton

Her time in the program built a strong foundation, teaching her invaluable lessons in self-advocacy. “It taught me how to advocate for myself and take chances,” Charity recalls. In 2018, she returned to IFB as an instructor, using her own experience with low vision, caused by Albinism, to teach blind children the same vital skills she once learned.

In 2024, Charity embraced an upward mobility opportunity by becoming a Low Vision Associate at the Ronald G. Sherrill Community Low Vision Center in Winston-Salem. In this role, she helps individuals maximize their remaining vision through personalized assessments and the use of low vision aids. Charity is also involved in the Focus on Literacy program, where North Carolina students who use assistive technology in school receive the same equipment for home at no cost. “I can personally attest to the difference these resources make in empowering students with vision loss,” she says.

“Taking advantage of these programs gave me a bright future,” Charity reflects. “I’m grateful for the support IFB receives to provide opportunities for people who are blind to succeed.”

Charity’s story is a testament to the vital role IFB’s programs play in building brighter futures, and how your support helps create opportunities for the blind community.

Charity volunteering with our S.E.E. students.



breaking. **barriers**



How Donor Support Provides Essential Medical and Transportation Services at IFB Solutions

At IFB Solutions, donor contributions are transforming lives by providing crucial services like on-site medical care and transportation for employees who are blind or visually impaired. For individuals like Tammy Moore, diagnosed with diabetes at age five and later losing her sight to Diabetic Retinopathy, the on-site health clinic has been life-changing, eliminating barriers that people who are blind encounter when accessing healthcare. “My health and quality of life have changed so much over the last ten years,” Tammy shares. The medical team’s daily support and education on diabetes management have helped her regain control of her health, empowering her to live a healthy life for her family and future.



TERESA NORWAY
Sewing Machine Operator

It is a support group on wheels!

Transportation is another area where donor dollars make a tremendous impact. Teresa Norway, who lost her vision due to an illness, struggled with the high cost and scarcity of transportation. After relocating to North Carolina to work for IFB Solutions, Teresa found newfound independence through IFB Solution's affordable, company-subsidized transportation. "I'm thankful for the transportation service IFB provides," she says. The service not only gets her to work but also creates a sense of community among coworkers.

Donor-funded services like on-site medical care and transportation also address significant barriers to employment, as 28.9% of people with disabilities report being unable to work due to health issues or transportation difficulties. By providing access to health programs, IFB Solutions helps improve employees' quality of life and work opportunities, particularly for those managing chronic conditions, with over 30% of working individuals reporting fair or poor health.*

Your contributions help steward these programs, offering life-changing support for those who need it most.

*VisonServe Alliance National and North Carolina State 2019 Report on Working-Age Adults with Blindness.

workforce



KAYLA COLE

Call Center Representative

*I've found
a job I
truly love!*



Scan to
watch
Kayla's
story.

Expanding Opportunities

In October of 2023, we embarked on an ambitious journey to raise \$3 million over three years, with the goal of employing three hundred people who are blind. Thanks to your incredible support, we're thrilled to announce that we're already 33% of the way there!

This campaign is more than just numbers—it's about changing lives of three hundred people who are blind through work-at-home call center jobs. Through our Workforce Services division, blind and visually impaired individuals from across the U.S.

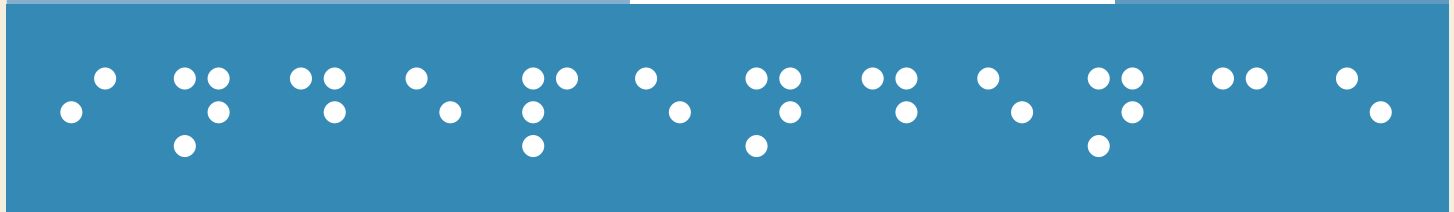
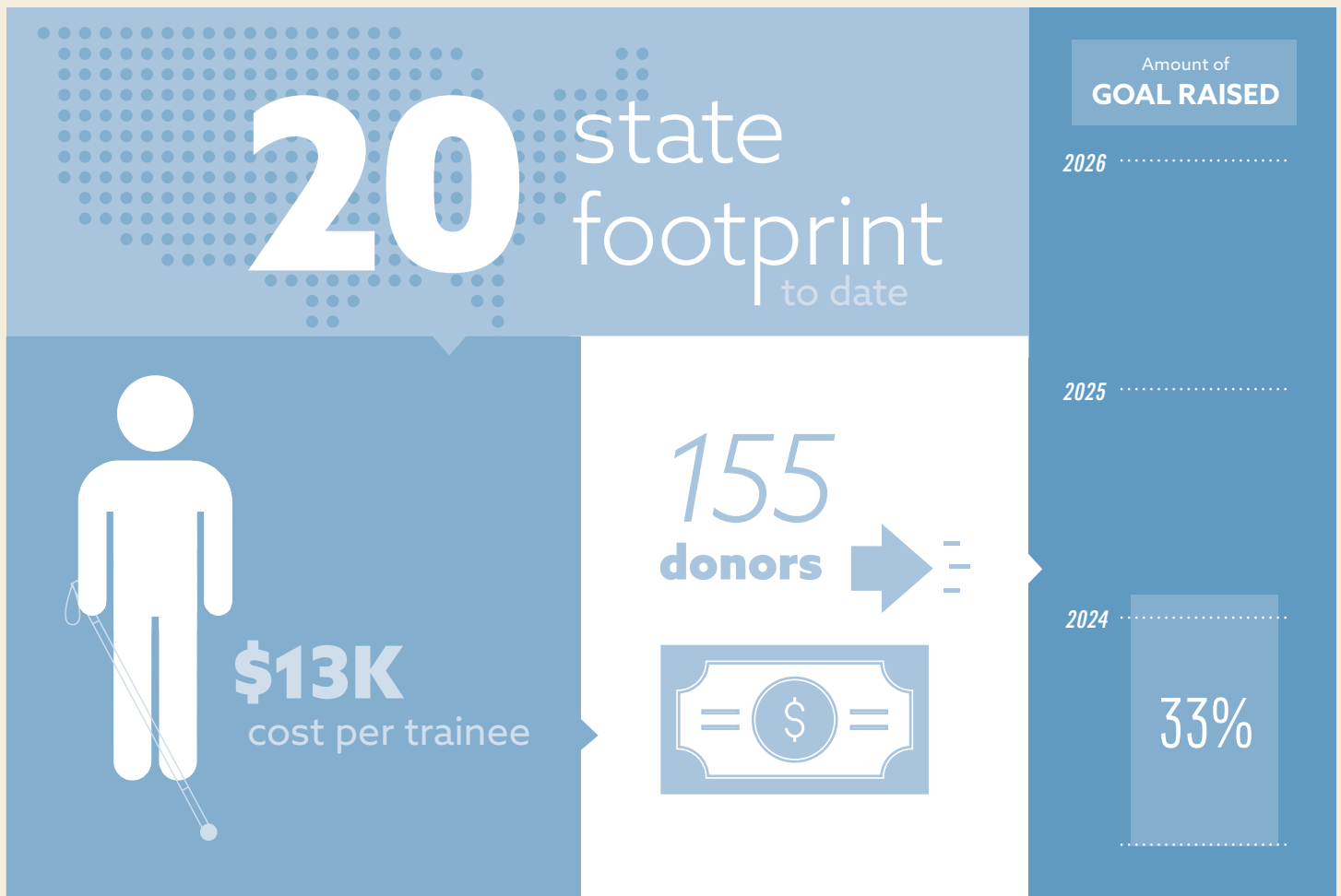
can now work from home, providing essential call center services. This setup eliminates the critical transportation challenges that many blind individuals face and offers the opportunity to join the workforce, live the American dream, and have the dignity of work.

Your donations have already made a tangible impact by funding essential equipment, screen-reading, and magnification software, allowing our team members to perform their jobs effectively. For instance, did you know that 70% of working-age blind individuals

services

are currently unemployed? With your support, we are directly combating this statistic, providing financial independence to those who need it most.

In addition to creating employment, your contributions help us reach people in remote areas, broadening our reach beyond traditional workspaces. Every dollar brings us closer to the finish line and together, we'll empower 300 individuals with meaningful employment and independence.

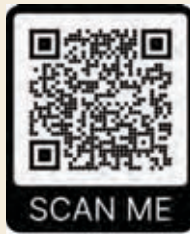


LET'S CONNECT

Anastasia Powell
Editor | Communications Manager

336-245-5698
apowell@ifbsolutions.org

7730 North Point Drive
Winston-Salem, NC 27106



©2024 Winston-Salem Industries for the Blind, D/B/A IFB Solutions., a 501(c)3 non-profit agency of the AbilityOne Program. All other trademarks property of their respective owners. Financial information about this organization and a copy of its license are available from the N.C. State Solicitation Licensing Branch at 919-807-2214. The license is not an endorsement by the State.

