

IFB Beat

STAY CONNECTED

Weekly Corporate Newsletter | Feb 7, 2022



News to Know

February: Low Vision Awareness Month



VIDEO EXTRA: "I Don't Have Time to Stop!"
Little Rock employee shares her inspirational story about the journey from low vision to no vision at all.

CLICK HERE TO WATCH: [YOUTUBE VIDEO](#)

Did you know?

- Eye care professionals use the term "low vision" to describe significant visual impairment that cannot be corrected with standard glasses, contact lenses, medicine, or eye surgery.
- Approximately 12 million people 40 years and over in the United States have vision impairments, including 1 million who are *blind*.

(Source: CDC)

ISSUE SECTIONS

[News to Know](#) [page 1](#)

[Programs and Services](#) [page 3](#)

[CLVC/Community Connections](#) [page 5](#)

[Opportunities/Insider/](#) [page 7](#)

Helpful Low Vision Information

- A white cane is not only used as a mobility tool but is also used to identify that the user has low vision or is blind.
- Never walk up and grab a person who is blind by the arm to assist them. Please ask if they need assistance and then offer your arm.
- If you're not sure how to help someone who is blind or has low vision, just ask.

An ever-increasing amount of people are at risk of developing a visual impairment as populations grow and demographic shifts move towards the predominance of older age groups. Protect and maximize your vision by seeing a doctor regularly. Take advantage of our Community Low Vision Center associates and experts in Winston-Salem, Asheville, and Little Rock.

For more information, or to schedule an appointment, contact the Community Low Vision Center.

www.communitylowvision.org

Winston-Salem Building Closure

The administration building, including the manufacturing floor, will be **CLOSED on Friday, February 25th**. (This does NOT include the Community Low Vision Center or the Optical department). Duke Energy will replace a transformer and we will not have electricity in the admin building. We ask that all office staff make plans accordingly.

BLOG: Pinnacle Mercantile Authentic Woobie

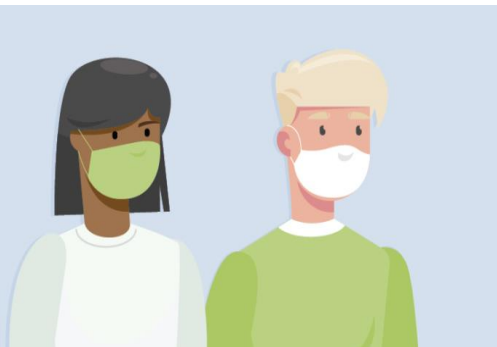


Manufacturing with Meaning: “Every day, I am moved by IFB Solutions employees who are blind.”

Meet an IFB Solutions employee and veteran who remembers using the poncho liner made by Asheville employees during his service in the army. It’s Dale’s job to ship the Pinnacle Mercantile Authentic Woobie to Amazon from our Clemmons Distribution Center.

BLOG: [CLICK HERE](#)
SHOP HERE: [AMAZON](#)

COVID Information



Free COVID-19 test kits are arriving via USPS daily to people’s home all over the country. All households are eligible for 4 tests. Click [HERE](#) to order or call 1-800-232-0233

Please stay home if you are sick, wash your hands, wear your mask, and if you test positive for COVID-19, stay home and contact your supervisor immediately.

Questions about COVID-19? Email staysafe@ifbsolutions.org

Programs and Services

[Braille Classes \(Winston-Salem\)](#)

Braille classes will be held in TAD's room Tuesdays 2 to 2:30 PM for advanced students and Thursdays 2 to 2:30 PM for beginning students. Please come and join in the fun and learning.

[See What S.E.E. is Doing](#)



S.E.E. Winston-Salem students made pastries in the shape of winter clothing by following a cool recipe poem to practice their independent cooking skills. Check it out!

Burr! When it's cold outside with snow and ice,
A warm snack will really be nice.
Spread the dough in a pan and Nutella on top,
Put another sheet of dough like a sandwich – kerplop.
Bake it in the oven 10 minutes or so
Use a talking timer and when it beeps, then go.
Grab your oven mitts, oven door to the floor
Pull out the rack, grab the pan, before...
You have a place to put the hot pan to let it cool,
Close the oven door and press the “off” bump dot tool.
Then take the cookie cutters of sweater, mitten, SOCK,
Toboggan, or whatever shows its winter cause being warm
rocks.
Use a double spatula to take the pastry from the hot pan over to
a plate
Then you're almost gonna eat it, but not yet just wait.
Use your pinchy fingers to sprinkle powdered sugar onto it.
Then enjoy your winter warmness because you deserve **it**.



S.E.E. Charlotte has partnered with Mecklenburg County Parks and Recreation to create a unique lesson using the Sound Scapes app. Kids who are visually impaired can enjoy the outdoors and learn how to navigate!

Follow IFB Solutions on Facebook, Twitter, LinkedIn and Instagram!

#SEEKidsCan

Awareness = Braille + Chocolate

(Winston-Salem ONLY) Send a message in Braille and large print attached to a piece of chocolate for \$2 to promote Braille awareness on Valentine's Day. Submit your note (no more than 2 typed lines) to Anastasia Powell at apowell@ifbsolutions.org or Kim Flanagan at kflanagan@ifbsolutions.org by February 1. It could be an "I love you" to that special someone or a "thank you".

All money is due to Anastasia or Kim by February 1. Chocolates with messages will be given out on Monday, February 14. All the money will go to the Student Enrichment Experience (S.E.E.) Program for the kids. We ❤️ Braille!

Guide Dog Etiquette Reminder



IFB has several employees with guide dogs. Employees are to understand:

- **Guide dogs are not pets.**
- **When in harness, the dog is working.**
- **Do not call the dog by name, especially when he/she is leading the owner as it distracts the dog.**
- **Do not pet the dog when in harness. If the dog is out of harness, only pet with the owner's permission.**
- **Only the owners are to feed their dogs. If you have a treat for a dog, give it to the owner out of view of the dog.**
- **If you see a dog out from under the table or in a walkway, let the owner know so the owner can move the dog.**

Adult Support Group Meetings:

- **Monday, February 7 AAA Committee meeting from 12:00-1:00 in TADS Room.**
- **Tuesday, February 8 Transportation support group meeting from 12:00-12:45 in TADS Room.**

(Zoom link at bottom of newsletter.)


Community Low Vision Center

CLVC Item of the Week
EZC Playing Cards for the Visually Impaired - **\$4.95** -
These large print cards are easy to read and have numbers with codes, so those with vision impairments can identify the cards.

February Item of the Month:
Tactile Puzzle Cube- Modified for the Blind

The classic puzzle with a tactile twist! This blind-accessible version of the best-selling ultimate brain-teasing puzzle has been enhanced with tactile markings on all sides.

To learn more about the Community Low Vision Center visit our [website](#) or follow us on [Facebook](#)

The logo for the Community Low Vision Center features a stylized graphic of two hands, one green and one purple, cupping each other. To the right of the graphic, the text "Community Low Vision Center" is written in a purple, sans-serif font, with "Center" on a separate line below "Low Vision".

Interested in purchasing these products? Or are you interested in purchasing low vision equipment through our Loan Program (3rd Party), please contact a Low Vision Coordinator for assistance.
www.communitylowvision.org

Community Connections



Thank you to the Community Foundation of Western N.C. for a \$20,000 grant that will help us provide job opportunities for people who are #blind. Read more about the grant and an Asheville employee whose life was changed by community support and job training after losing his vision.

IN THE NEWS: [Mountain Xpress Article](#)

[Congratulations to the Leadership Essentials class of 2022!](#)

IFB Solutions in Winston-Salem is excited to be partnering with Guildford College once again to offer the Leadership Essentials class. Participants will be focusing their learning in the following areas:

- Communicating for Leadership Success
- Coaching: Move People Forward
- Strategies for Influencing Others
- Setting Goals and Reviewing Results
- Developing Yourself and Others.

We are pleased to introduce this year's class:

- Brooke Brown
- Josiah Clapp
- Cole Deluca
- Christopher Gantt
- Marcia Harton
- Luis Quiles
- Shonn Redmond
- Diana Soto
- Naomi Venable

[Way to go class of 2022!](#)

Insider Corner

Accessible Word Ladders

If you like Word Ladders then you will love these thousands of puzzles in English, Spanish, French, and Dutch. The puzzles range from 4 to 7 letters in length and choice of backgrounds which include sand, grass, and stone. Customizable tile themes such as white on black, black on white and others. Designed for blind, visually impaired and sighted users. Fully accessible with voiceover. This app is from a developer who himself, is blind. So, it's no surprise that this app is fully accessible. Any bug reports, suggestions very welcome via email. info@woodsideapps.co.uk

iOS App store link:

<https://apps.apple.com/us/app/accessible-word-ladders/id1562960650>

Android user?

Have a game you want to share? Send to Faith Harding at: FHarding@ifbsolutions.org

If you'd like to share information in the Insider Corner, contact Faith Harding at:

FHarding@ifbsolutions.org. Have an awesome week!

Opportunities

[We are HeRe for you!](#)

Our goal at IFB Solutions is for each employee to thrive both inside and outside of work! Do you realize how many resources and opportunities are available within our own company and even in the community? Our Community Low Vision Center has great tools to help you excel! We also have support groups, where you can connect with other employees. We even have career and personal development opportunities to help you become more independent in any area you would like to advance. Take advantage of the tools that are available by requesting a meeting with Haleigh Yarboro, our Certified HR Transition Representative.

[Job Announcements](#)

Optical Customer Service Support Agent I

Education and work experience:

- High School Diploma or GED equivalent
- Bilingual English and Spanish a plus but not required.
- 3 to 6 months minimum of general customer service experience required.

Internal candidates may apply [here](#).

External candidates may apply [here](#).

Anti-Reflection Technician I (Day Shift)

Education and work experience:

- High School diploma or GED equivalent
- 1 years of Optical lab experience

External candidates may apply [here](#).

Internal candidates may apply [here](#).

Anti-Reflection Technician I (Night Shift)

Education and work experience:

- High School diploma or GED equivalent
- 1 years of Optical lab experience

External candidates may apply [here](#).

Internal candidates may apply [here](#).

Please contact Brent Burkholder at X5611 if you have any questions or need assistance.

[Adult Support Group: Join Zoom Meeting](#)

<https://ifbsolutions.zoom.us/j/99498078576?pwd=ODJzK0sxcXZrME9yN25YRTdiNXBSQT09>

Meeting ID: 994 9807 8576

PASSWORD: 92638

One tap mobile

+13017158592,99498078576# US (Germantown) 13126266799,99498078576# US

Dial by your location.

877 853 5257 US Toll-free

888 475 4499 US Toll-free

Meeting ID: 994 9807 8576

If you would like to receive the IFB Beat via email please contact Faith Harding at fharding@ifbsolutions.org or Shonn Redmond at sredmond@ifbsolutions.org to be added to the list. Or listen to the IFB Beat by calling our English-line 336-245-5691; Spanish-line, 336-245-5663. To submit information to the IFB Beat, email communications@ifbsolutions.org